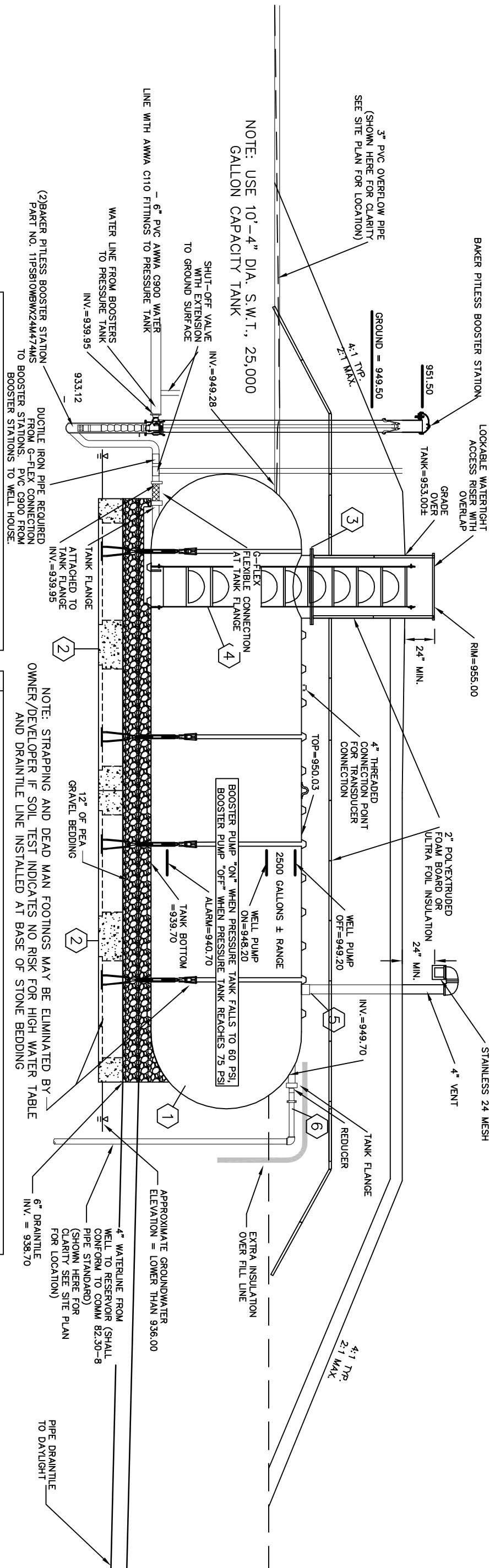


NOT TO SCALE

**PUMP CONTROL**  
 UNDER NORMAL OPERATING CONDITIONS, THE WELL PUMP WILL BE OPERATED BASED UPON THE WATER LEVEL IN THE RESERVOIR TANK. THE "ON" AND "OFF" WATER LEVELS FOR THE WELL PUMP WILL BE 948.70 FEET AND 949.20 FEET, RESPECTIVELY. AN ALARM WILL BE ACTIVATED WHEN WATER LEVEL DROPS TO 940.70 FEET. UNDER NORMAL OPERATING CONDITIONS, THE BOOSTER PUMPS WILL ALTERNATE WITH EVERY ON/OFF CYCLE. THE BOOSTER PUMPS WILL BE CONTROLLED BY PRESSURE FLUCTUATIONS IN THE PRESSURE TANK. PRESSURE CONTROL DEVICES WILL START A BOOSTER PUMP WHEN THE PRESSURE IN THE PRESSURE TANK DROPS TO 60 PSI, AND STOP THE BOOSTER PUMP WHEN THE PRESSURE REACHES 75 PSI. THE SPEED OF THE BOOSTER PUMPS SHALL BE CONTROLLED WITH A VFD AND TRANSDUCER (PRESSURE SENSOR). THE SECOND BOOSTER PUMP WILL BE TRIGGERED BY A PRESSURE DROP IF THE FIRST PUMP CANNOT MAINTAIN ADEQUATE PRESSURE.



NOTE: USE 10'-4" DIA. S.W.T., 25,000 GALLON CAPACITY TANK

(2)BAKER PITLESS BOOSTER STATION PART NO. 11PSB10WBW24M474MS TO BOOSTER STATIONS TO WELL HOUSE.

This drawing is for illustrative purposes only. Consult with an engineer for specific applications.

**XERXES**  
 CORPORATION

ILLUSTRATIVE APPLICATION DRAWINGS  
 NSF Listed Potable Water  
 Storage Tank

DR. NO. S20-302 DATE 6-22-06

NOTE: STRAPPING AND DEAD MAN FOOTINGS MAY BE ELIMINATED BY OWNER/DEVELOPER IF SOIL TEST INDICATES NO RISK FOR HIGH WATER TABLE AND DRAIN TILE LINE INSTALLED AT BASE OF STONE BEDDING

DESCRIPTION

NO.	DESCRIPTION
1	XERXES SINGLE WALL FRP TANK
2	XERXES PRECAST DEAD MAN SYSTEM W/ HOLD DOWN STRAP AND TURNBUCKLE ASSY. (ONLY IF TEST HOLE INDICATES SEASONAL HIGH GROUND WATER)
3	30" MAN WAY W/ EXTENSION W/ GAUGE PLATES
4	NSF APPROVED FRP LADDER
5	4" VENT W/ GAUGE PLATE
6	4" TANGENTIAL NOZZLE

APPROXIMATE GROUNDWATER ELEVATION = LOWER THAN 936.00  
 4" WATERLINE FROM WELL TO RESERVOIR (SHALL CONFORM TO COMM 82.30-8 PIPE STANDARD) (SHOWN HERE FOR CLARITY SEE SITE PLAN FOR LOCATION)  
 INV. = 938.70

PIPE DRAIN TILE TO DAYLIGHT