

THWEST CORNER SECTION 27 TION-R19E

# PRELIMINARY PLAT SHERMAN HEIGHTS

LOCATED IN:  
THE NE 1/4, NW 1/4, SE 1/4 AND SW 1/4 OF THE NW 1/4 OF SECTION 27, T. 10 N., R. 19 E., VILLAGE OF SLINGER, WASHINGTON COUNTY, WISCONSIN

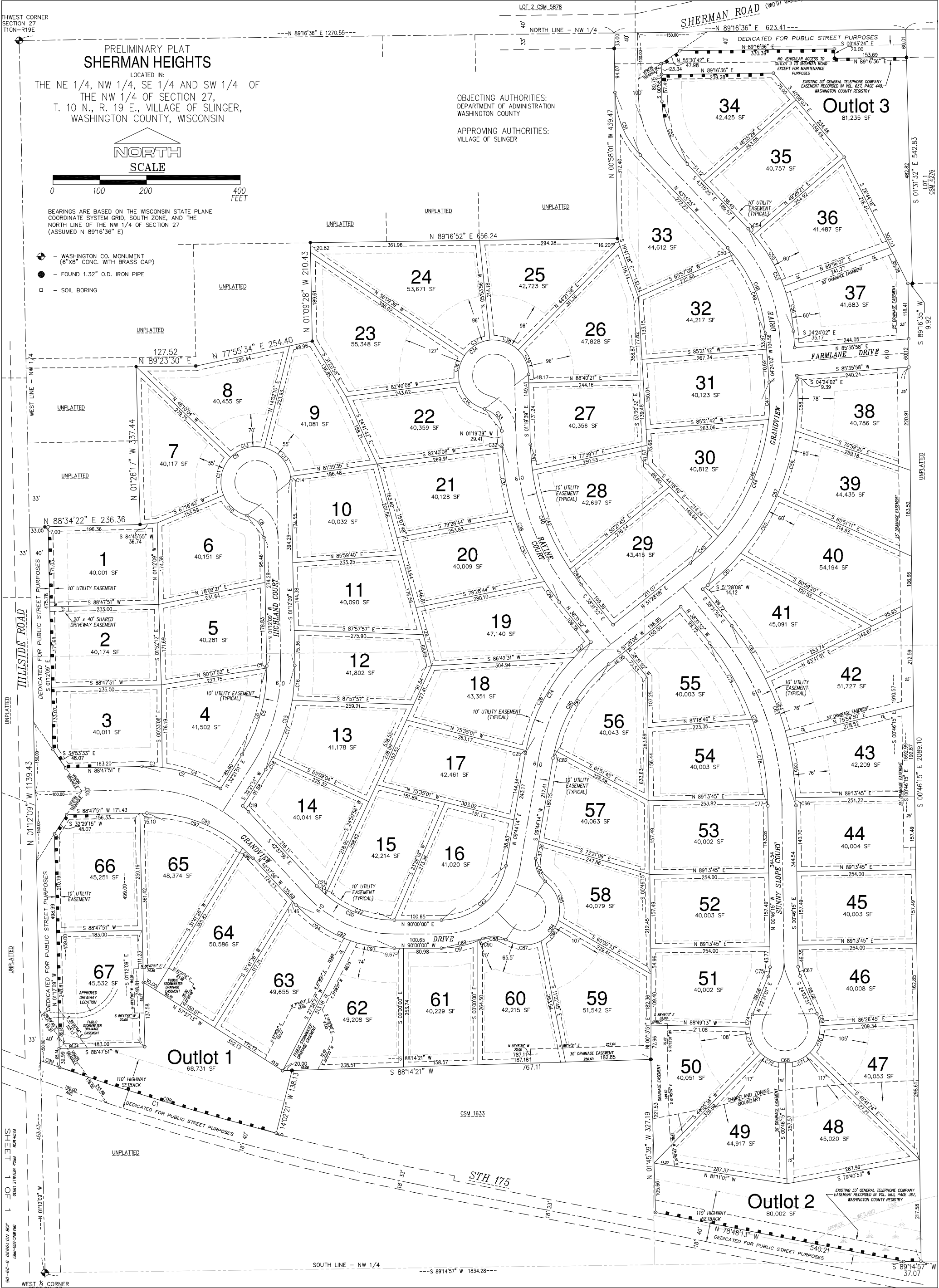


BEARINGS ARE BASED ON THE WISCONSIN STATE PLANE COORDINATE SYSTEM GRID, SOUTH ZONE, AND THE NORTH LINE OF THE NW 1/4 OF SECTION 27 (ASSUMED N 89°16'36" E)

- ⊕ - WASHINGTON CO. MONUMENT (6"X6" CONC. WITH BRASS CAP)
- - FOUND 1.32" O.D. IRON PIPE
- - SOIL BORING

OBJECTING AUTHORITIES:  
DEPARTMENT OF ADMINISTRATION  
WASHINGTON COUNTY

APPROVING AUTHORITIES:  
VILLAGE OF SLINGER



SHEET 1 OF 1  
DATE: 05/20/2019  
DRAWN BY: J. J. JENSEN  
CHECKED BY: J. J. JENSEN

LOT 1  
CSM 4276

UNPLATTED

UNPLATTED

UNPLATTED

UNPLATTED

UNPLATTED

CSM 1633

STH 175

CSM 1633

S 01°31'32" E 542.83

S 89°16'35" W 118.41

S 89°16'35" W 60.12

S 89°16'35" W 220.91

S 89°16'35" W 183.52

S 89°16'35" W 212.59

S 89°16'35" W 190.57

S 89°16'35" W 162.57

S 89°16'35" W 157.49

S 89°16'35" W 162.85

S 89°16'35" W 217.58

S 89°16'35" W 37.07

WEST 1/4 CORNER

SOUTH LINE - NW 1/4

S 89°14'57" E 1834.28

S 89°14'57" E 37.07

WEST 1/4 CORNER